



The Will To Live Foundation, Inc.

“For The Kids, Through The Kids, By The Kids”



WELCOME TO THE 2023 EDITION OF WHERE THERE'S A WILL THERE'S A WAY 5K *(The 13th Anniversary of Our 'Fun Run For Hope')*

Directions, Parking instructions, Check In Procedure and 5K Course document!

General Directions To River Trail Middle School / Shakerag Park

10795 Rogers Circle, Johns Creek, GA 30097

This is actually River Trail Middle School's Address

- River Trail Middle School is in Johns Creek off of Bell Road between McGinnis Ferry Road and Abbots Bridge Road (120).
 - **Coming From McGinnis Ferry** – Head South on Bell Road until you reach the 2nd Rogers Circle (the more Southern intersection of Bell and Rogers Circle) – you will see signs and volunteers telling you where you turn left onto Rogers Circle and head up to River Trail Middle School
 - **From Abbots Bridge (120)** head North on Boles Road – which then turns into Bell Road- then turn right on the first Rogers Circle (the more Southern intersection of Bell and Rogers Circle). You will see signs and volunteers telling you where you turn left onto Rogers Circle and head up to River Trail Middle School.

RUNNER DROP OFF & PARKING INSTRUCTIONS:

- Driving Entrance To River Trail Middle School:
 - Enter Rogers Circle off of Bell Road
 - (accessible either from McGinnis Ferry Rd or Boles Road and 141 (see map A/B below).
- Important – you will only be allowed to enter via the South Entrance of Rogers Circle. You will then either “drop off participants” or follow signs (and volunteers) to parking
- **IF DROPPING OFF PARTICIPANTS (and not Parking):** You take the first (South) River Trail entrance which is the “car pool” lane and drop participant off at front of school – and then drive out via the car pool route – signs and volunteers will direct you – you will then exit heading North onto Rogers Bridge – heading out towards Bell Road.

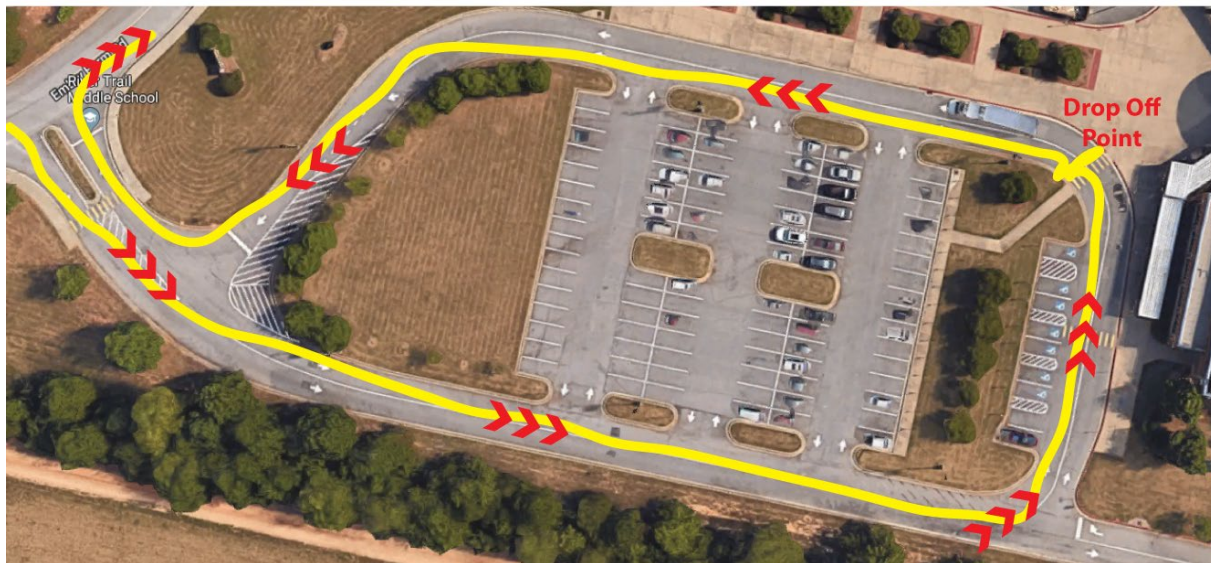


The Will To Live Foundation, Inc.

“For The Kids, Through The Kids, By The Kids”



DROP OFF AREA MAP – AT RIVER TRAIL MIDDLE SCHOOL:

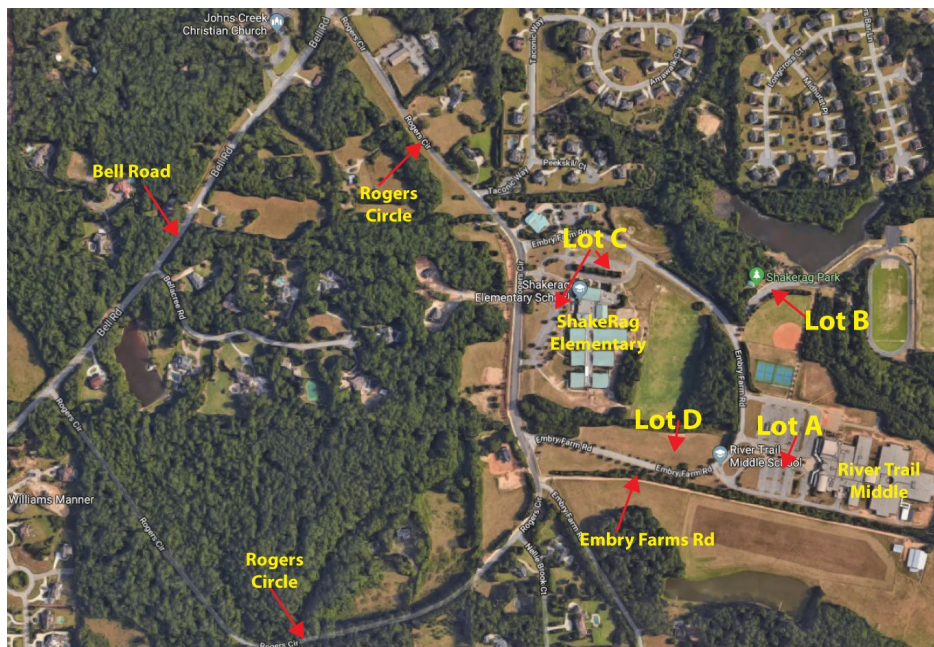


Parking Guidelines are as follows:

IF YOU ARE PARKING: There are several large parking lots for the 5k race

- There will be signs and volunteers instructing you to the lots as they fill up. Please drive slowly at all times – as it will be very busy – see parking lot diagram below. Please arrive early to avoid last minute rush issues. Gates open at 8am – race to begin at 9/9:15am – see Map below.

OVERALL PARKING AIRIAL VIEW:





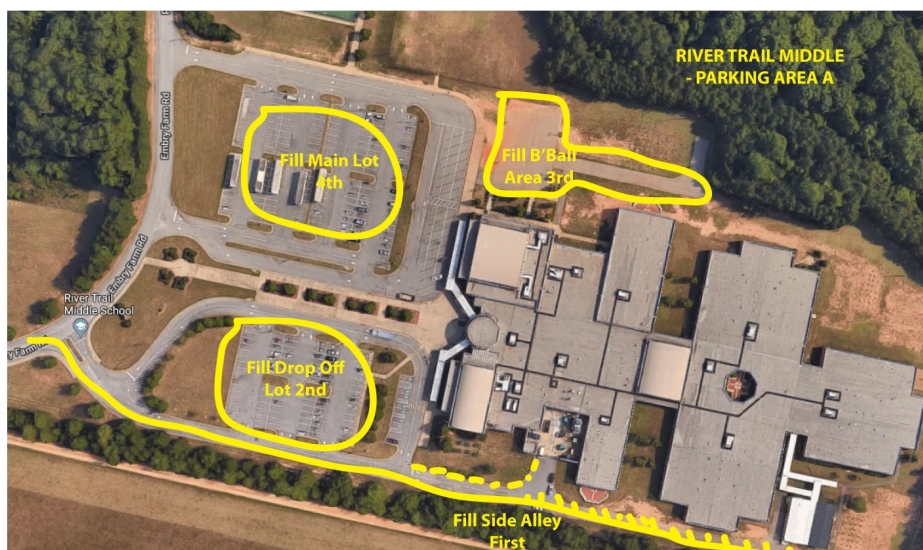
The Will To Live Foundation, Inc.

“For The Kids, Through The Kids, By The Kids”



Parking Area A: - River Trail Middle School

- We will fill up the “side alley” to the right of the middle school first.
- We will fill up the Car Pool parking lot 2nd
- We will fill up the main River trail parking lot 3rd
- Note – we will also fill up the basketball court as parking as well.
- When there are no more spots in these lots we move to Parking Area B:



Parking Area B: - Shake Rag Park

SHAKE RAG PARK - located between River Trail and Shakerag schools

- This is a much smaller area which will only hold approximately 30-40 cars.
- When this is filled – we will “close” the entrance with “lot full” and additional signs pointing to additional parking towards Shake Rag Elementary School – Parking Area C”





The Will To Live Foundation, Inc.

"For The Kids, Through The Kids, By The Kids"



Parking Area C: Shakerag Elementary School

- There is a side lot and a front lot for Shakerag middle school.
- The front lot first – when that is full – the side lot is filled



Parking Area D: Grass Lot - left side of Embry Farms

- There will be one entrance to the grass lot and that is up at the front of the grass lot- close to River Trail Middle School
- The cars will then park against the far "woods" working their way down towards Embry Farms Rd
- The parking team will create 3 full parking rows for people to park.
- Note- when we are filling up the grass lot – we will use the "left lane" of Rogers circle as the parking lot lane – keeping the right lane of Rogers Circle open for people who are "dropping Off" – so they can easily continue into River Trail's car pool entrance.



NOTE: PLEASE TRY TO ARRIVE EARLY. WE EXPECT OVER 1500 PARTICIPANTS AGAIN THIS YEAR AND THE EARLIER YOU CAN ARRIVE – THE QUICKER YOU'LL BE ABLE TO PARK AND CHECK IN! GATES OPEN AT 8AM!



The Will To Live Foundation, Inc.

“For The Kids, Through The Kids, By The Kids”



CHECKING IN / GETTING YOUR RACE BIB!

- **Check In Location: MAIN GATHERING AREA**
 - Located at the very front of River Trail Middle School – you can’t miss it - look for the Registration signs
- **If you have registered on line:**
 - Go straight to the main check in area to get your bib (under the awnings close to the School)
 - Please bring your emailed receipt you received during check in to speed up process.
 - If you don’t have your receipt, we will be able to find you by name/ID
 - Note: you will be able to register on-line up until the race begins. Day of race pricing is \$30 for all runners regardless. Credit cards, cash and Checks made out to Will To Live accepted.
 - If you register before **6pm on Friday February 3rd, 2023** the prices are:
 - \$20 if running with a team (10 or more)
 - \$25 if not on a team (individual runner)
 - \$30 for everyone who walks up on day of the race
- **If you have not registered and are a “walk up” cash payer (\$30)**
 - You must first “register” at the registration table across the way from the check in tables. (look for signs and volunteers will be there to help) and then you go to the check in tables.
 - ***All Walk Ups are \$30/each regardless of age or if you are on a team or not (so order on-line prior to 2/03/22 to save!***
- **Starting Line**
 - Will be right at the North entrance of River Trail Middle School (same as last year) Alongside the Tennis Courts
 - Runners – Line up first – then Walkers behind runners - SIGNS WILL BE POSTED
 - Race begins by heading out onto Rogers Bridge road in a counter clockwise fashion (heading North) see 2nd map below.
- **Finish Line**
 - See Map 2 below... finish line is VERY CLOSE TO THE STARTING LINE at the far North entrance of River Trail Middle School – and ends right in front of the check in area.
 - At finish – head to main check in area and go to the “T-Shirt” tables to pick up your official Race **(one each per participant)**
 - There will be other souvenirs for sale – and all Post – race activities will be at the Main Gathering Area
 - Please refer to course map below!





The Will To Live Foundation, Inc.

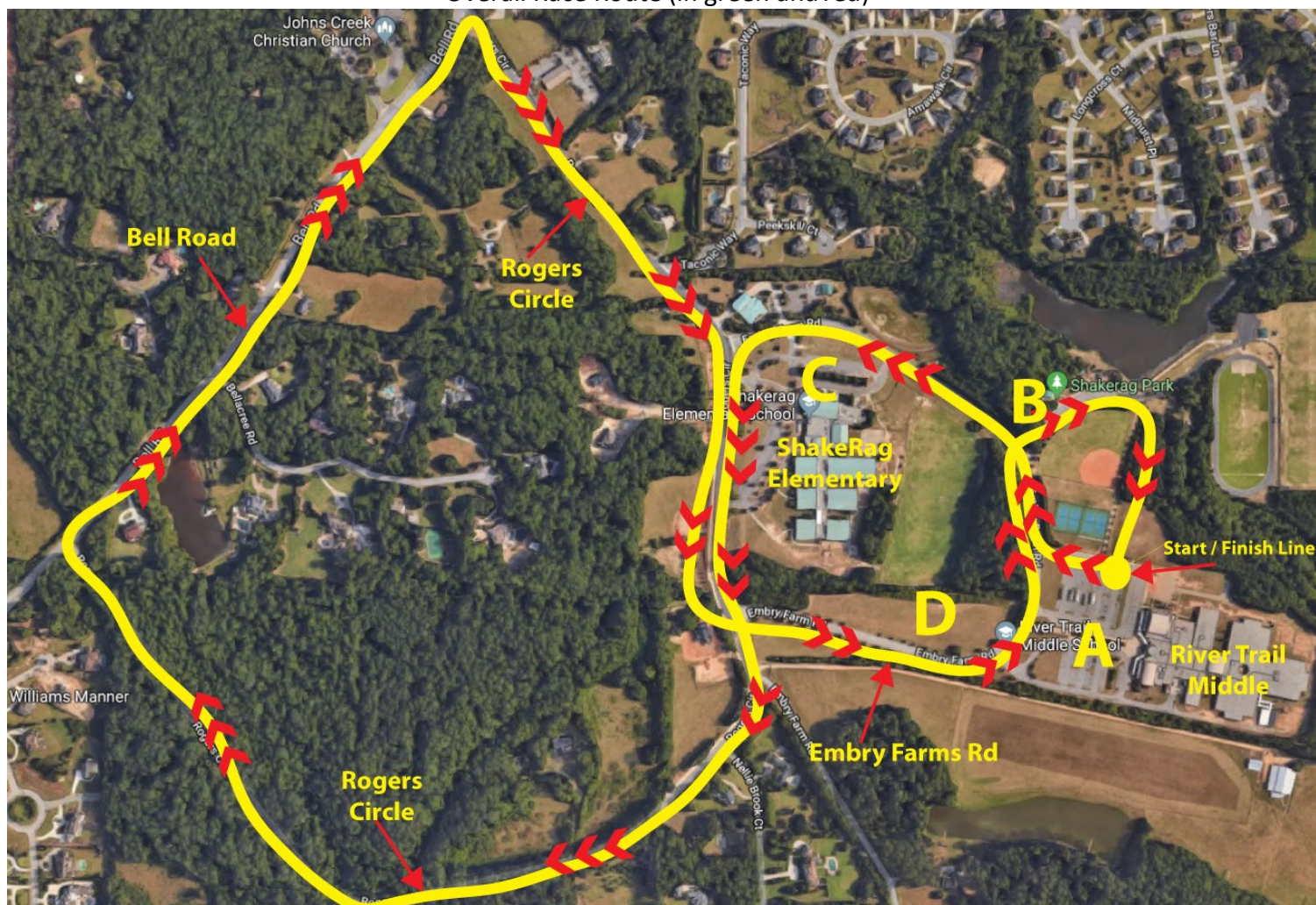
"For The Kids, Through The Kids, By The Kids"



The Where There's A Will There's A Way 5K

Fun Run Course

Overall Race Route (in green and red)



Volunteers will be stationed throughout the course insuring everyone knows where they're going!

For more information visit us online at www.will-to-live.org/willsway5k23/